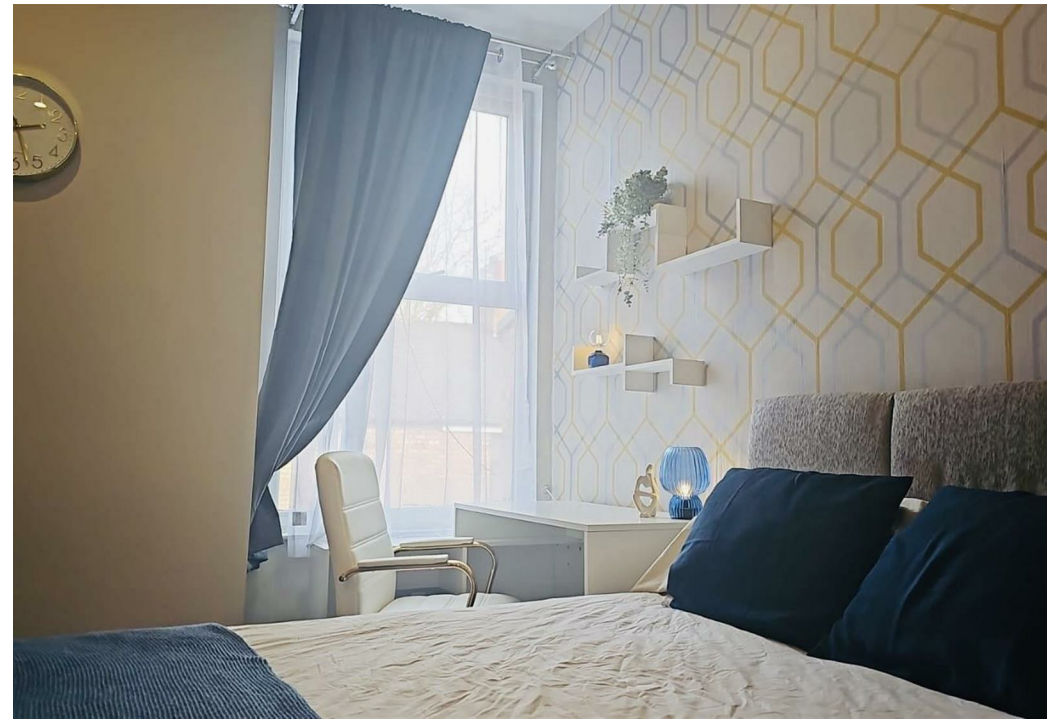
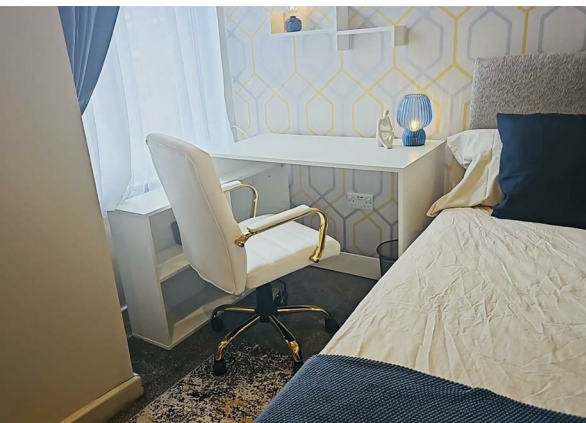
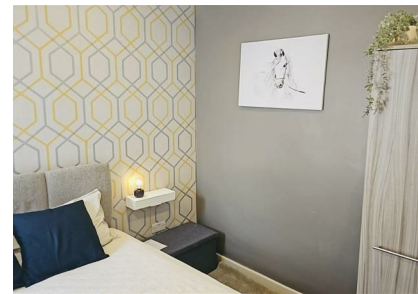


Ince Avenue, Anfield, L4 7UX

£470 Per Month

Council Tax Band: A



Bright and Spacious Four-Bedroom House on Ince Avenue, L4.

This stunning four-bedroom HMO is the perfect choice for professionals seeking modern, high-quality accommodation in one of Liverpool's most vibrant areas. This property offers the ideal blend of comfort, style, and convenience, making it a standout choice for busy professionals.

Key Features and Benefits:

- **Modern Amenities:** Enjoy the comfort of two bathrooms, a fully equipped kitchen, and a spacious communal lounge with a 55" smart TV.
- **Superfast Connectivity:** Stay connected with ultra-fast 300 Mbps broadband and Wi-Fi extenders throughout the property.
- **Stylish Design:** Fresh, contemporary interiors with plush furnishings and ample natural light.
- **Convenient Location:** Situated in the heart of Lawrence Road, just steps away from local shops, cafes, and excellent transport links to the city center.
- **All-Inclusive Rent:** No more juggling multiple bills—rent covers utilities, high-speed internet, and communal cleaning services.
- **Professional Tenants:** Share with like-minded professionals, fostering a friendly and respectful atmosphere.
- **Outdoor Space:** Unwind in the private, well-maintained rear garden—perfect for sunny days and socializing.
- **Responsive Management:** A dedicated property management team ensures your living experience is smooth and hassle-free.

Don't miss this exceptional opportunity to live in a high-quality, well-managed property in one of Liverpool's most vibrant neighborhoods. Arrange a viewing today!

About Room 3:

- Rent: £470 per month (bills not included)
- Deposit: £ 470
- Availability: Move-in ready now



Open House Liverpool



Energy Efficiency Rating		
	Current	Potential
Very energy efficient - lower running costs		
(92 plus) A		
(81-91) B		
(69-80) C		
(55-68) D	53	
(39-54) E		
(21-38) F		
(1-20) G		
Not energy efficient - higher running costs		
England & Wales	EU Directive 2002/91/EC	